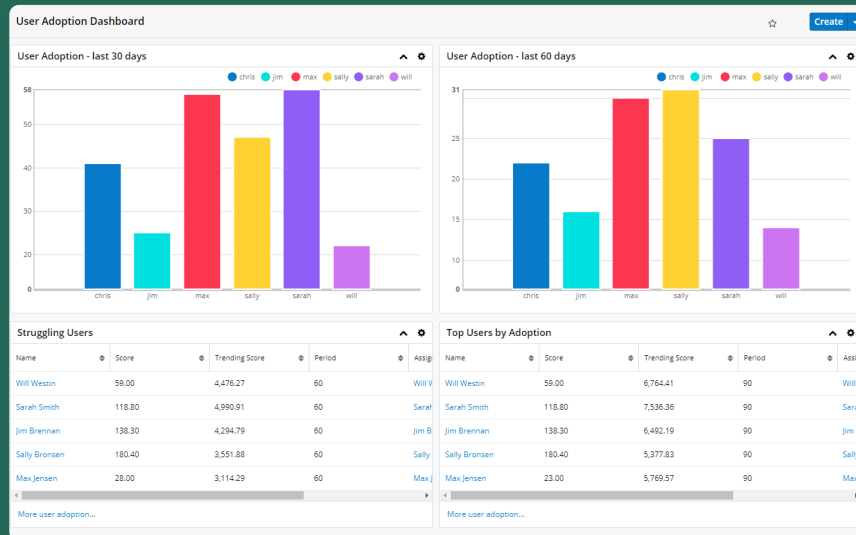


# UTILIZATION MONITOR FOR SUGARCRM®

Are you looking for actionable insight into how your team is using Sugar? The Utilization Monitor for Sugar enables managers and supervisors with valuable optics into what their CRM users are doing within the platform.

A must-have user adoption driver, the Utilization Monitor for Sugar, provides a real-time visual dashboard of the critical business activities managers need to track their CRM platform usage.



## FEATURES & BENEFITS

### Tracking

Track users' interaction with the system.

### Trends

See how usage is changing over time.

### Visibility

View sales history on any account record view without having to run a report.

### Compare

Compare usage between users and user groups.

### Customize

See when a user isn't using a feature.